

SECTION 3

MATERIAL HANDLING GOODS

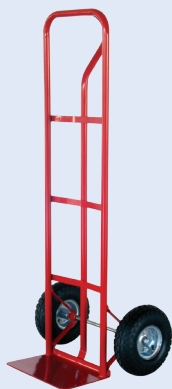
MATERIAL HANDLING GOODS

Dolleys and Trolleys	74
Hand Carts and Hydraulics	75
Utility and Tool Carts	76
Jacks	77
Trailer Jacks	78
Jack Accessories	79
Couplers, Mounts, & Ball Hitches	80





SMALL TRUCK DOLLY



Part#	85.600.011
Capacity	600 lbs
Wheels	10" Pneumatic Tires
Height	52"
Frame	Red Powder Coated
Handle	Loop For Easy Use
Weight	27 lbs

REPLACEMENT PARTS

Axle	85.604.011
Tires	85.604.009

LARGE TRUCK DOLLY



Part#	85.600.012
Capacity	700 lbs
Wheels	14" Pneumatic Tires
Height	52"
Frame	Red Powder Coated
Handle	Loop For Easy Use
Weight	31 lbs.

REPLACEMENT PARTS

Axle	85.604.008
Tires	85.604.010

APPLIANCE DOLLY



Part#	85.600.014
Capacity	750 lbs
Wheels	6" Solid Wheels
Height	60½"
Frame	Red Powder Coated
Treads	Crawler For Stairs
Rubber	Non Marking
Ratchet	Secure & Tighten Load
Weight	48 lbs

REPLACEMENT PARTS

Stair Climber	85.604.006
Upper Ratchet	85.604.003
Wheel	85.604.002

HAND TROLLEY



Part#	HT1842
Capacity	550 lbs
Wheels	10" Pneumatic Tires
Body Size	L52" x W22" x H18"
Toe Plate Width	7"
Frame	Red Powder Coated
Weight	30 lbs.

REPLACEMENT PARTS

Castor Wheel	85.604.031
Tires	85.604.030

3-IN-1 HAND TROLLEY

Easily converts between truck dolly to an appliance dolly or hand dolly.



Part#	85.600.019
Capacity	440 lbs
Wheels	10" Pneumatic Tires
Body Size	L50" x W24" x H22"
Toe Plate Width	12"
Frame	Red Powder Coated
Weight	46 lbs



PLATFORM HAND TRUCK



Part#	PH150
Capacity	150 Kgs
Wheels	4" casters
Body Size	L28" x W18"
Weight	20 lbs

REPLACEMENT PARTS

Swivel Castor Wheel	85.604.070
Rigid Castor Wheel	85.604.071

PLATFORM HAND TRUCK



Part#	PH300
Capacity	300 Kgs
Wheels	5" casters
Body Size	L35" x 24"W
Weight	37 lbs

REPLACEMENT PARTS

Swivel Castor Wheel	85.604.072
Rigid Castor Wheel	85.604.073

MOVING CART



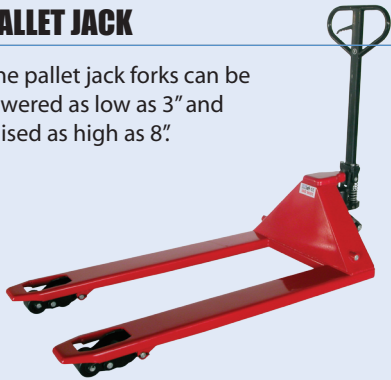
Part#	D1000
Capacity	600 lbs
Wheels	3" casters
Body Size	L30" x W18" x H5.5"
Weight	12 lbs

REPLACEMENT PARTS

Castor Wheel	85.604.074
--------------	-------------------

PALLET JACK

The pallet jack forks can be lowered as low as 3" and raised as high as 8"



Part#	PJ5500R
Capacity	5,500 lbs
Front Wheels	2 Rubber Wheels
Fork Wheels	Polyurethane 2" x 7"
Outside Fork Width	27"
Inside Fork Width	15"
Fork Length	48"
Handle	3 Control Position
Weight	203 lbs

REPLACEMENT PARTS

Rear Wheel	85.604.021
Fork Wheel	85.604.020

HYDRAULIC LIFT



Part#	85.600.200
Capacity	300 Kgs.
Max Height	35.5"
Min Height	12.5"
Wheels	5" casters
Base Plate	L32" x W20"
Weight	160 lbs



TOOL CART, SOLID BASE



Part#	TC1820
Capacity	250 lbs
Wheels	10" Pneumatic Tires
Body Size	L42" x W20" x H13"
Frame	Gray Powder Coated
Weight	64 lbs

REPLACEMENT PART

Tire	85.604.009
------	-------------------

UTILITY CART, OPEN DECK



Part#	TC1807
Capacity	250 lbs
Wheels	10" Pneumatic Tires
Body Size	L48" x W24" x H12"
Frame	Green Powder Coated
Weight	58 lbs

REPLACEMENT PART

Tire	85.604.009
------	-------------------

GARDEN CART



Part#	TC1858
Capacity	500 lbs
Wheels	13" Pneumatic Tires
Body Size	L52" x W30" x H40"
Frame	Green Plastic
Weight	80 lbs

REPLACEMENT PART

Tire	85.604.032
------	-------------------

ACCESSORY CART



Part#	85.600.010
Wheels	4" Lockable Casters
Height	34 1/4"
Frame	Red Powder Coated
Trays	L29" x W15 1/4" x H2"
Weight	31 lbs

ACCESSORY CART, TOOL CHEST



Part#	85.600.201
Wheels	4" Lockable Casters
Height	34 1/4"
Frame	Red Powder Coated
Trays	L29" x W15 1/4" x H3"
Drawers	2
Weight	74 lbs



TOP WIND JACKS



Part#	BE-020	BE-520
Capacity	2,000 lbs	2,000 lbs
Wind	Top	Top
Lift	10"	15"
Length	11½"	15½"
Weight	11.2 lbs	13.5 lbs

SIDE WIND JACKS



Part#	BE-050	BE-550
Capacity	5,000 lbs	5,000 lbs
Wind	Side	Side
Lift	10"	15"
Length	11½"	15½"
Weight	14.5 lbs	16.9 lbs

TOP WIND JACK, A FRAME



Part#	BE-120
Capacity	2,000 lbs
Wind	Top
Lift	13"
Length	8"
Weight	9.5 lbs

TOP WIND JACK (PREMIUM)



Part#	ST-2104	ST-2154
Capacity	2,000 lbs	2,000 lbs
Wind	Top	Top
Lift	10"	15"
Length	11"	16"
Weight	10.5 lbs	12.5 lbs

SIDE WIND JACK (PREMIUM)



Part#	LT-5103	LT-5153
Capacity	7,000 lbs	7,000 lbs
Wind	Side	Side
Lift	10"	15"
Length	11"	16"
Weight	13.5 lbs	15 lbs

TOP WIND JACK (PREMIUM)



Part#	BE-555
Capacity	5,000 lbs
Wind	Top
Lift	15"
Length	15½"
Weight	13.8 lbs



WELD FLANGE JACKS

Bracket & retaining ring swivel mount. Locks in 4 positions. Includes mounting plate, retaining ring, spring loaded lock pin and grease nipple.



Part#	FJ-020	FJ-530
Capacity	2,000 lbs	2,000 lbs
Wind	Top	Side
Lift	10"	15"
Length	11"	15"
Weight	11 lbs	14 lbs

HEAVY DUTY JACKS

Heavy duty premium jacks with telescoping leg. Use weld-on bracket BE-701.



Part#	BE-720	BE-700
Capacity	7,000 lbs	7,000 lbs
Wind	Top	Side
Lift	26"	26"
Weight	22.5 lbs	24.4 lbs

HEAVY DUTY JACK

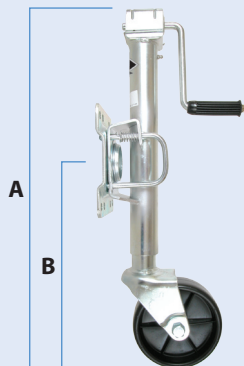
Heavy duty premium 12,000 lbs side wind jack with Spring Return Drop Leg, comes with handle.



Part#	BE-1200
Capacity	12,000 lbs
Wind	Side
Lift	26"
Weight	62.1 lbs

TRAILER JACK, SMALL

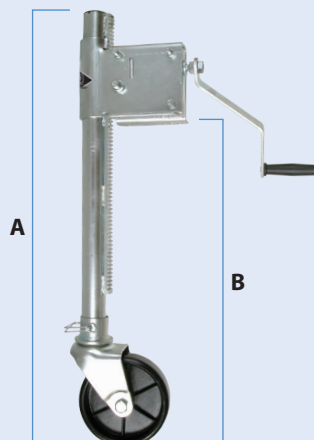
Comes with grease nipple



Part#	TJ-06-01K
Capacity	1,000 lbs
Lift	10"
Retracted Height (A)	24"
Retracted Mount H. (B)	14"

TRAILER JACK, MEDIUM

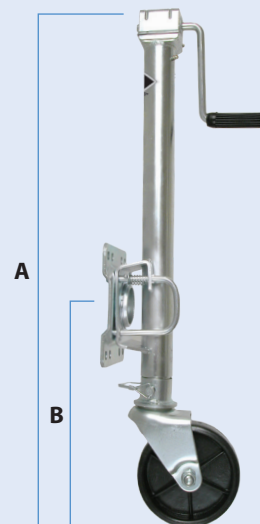
Comes with grease nipple



Part#	TJ-01-405
Capacity	750 lbs
Lift	14"
Retracted Height (A)	29"
Retracted Mount H. (B)	8.5" - 23"

TRAILER JACK, LARGE

Comes with grease nipple



Part#	TJ-07-51L
Capacity	1,000 lbs
Lift	15"
Retracted Height (A)	30"
Retracted Mount H. (B)	12.5"



WHEEL, 6" REPLACEMENT

Replacement wheel for trailer jack.



Part#	TJ-06-04
Capacity	1000 lbs
Fits	TJ-06-01K
Weight	0.90 lbs

A-FRAME JACK WHEEL ASSEMBLY

Complete wheel assembly for BE-120 A-frame jack comes with pin.



Part#	TJ-06-02
Capacity	1000 lbs
Fits	BE-120
Weight	3.85 lbs

A-FRAME JACK STAND ASSEMBLY

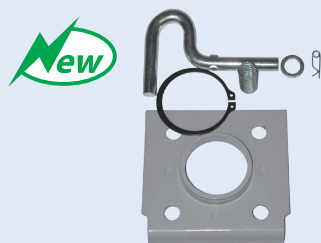
Complete stand for BE-120 A-frame jack comes with pin.



Part#	TJ-06-03
Capacity	1000 lbs
Fits	BE-120
Weight	1.85 lbs

REPLACEMENT FLANGE KIT

Complete replacement flange kit for the FJ-020 and FJ-530 flange jacks. Comes with flange, pin, springs, & clips.



Part#	FJ-02-20B
Capacity	2000 lbs
Fits	FJ-020, FJ-530
Weight	1.70 lbs

HD JACK WELD-ON BRACKET

Weld-on collar and flat base.



Part#	BE-701
Fits	BE-720, BE-700
Weight	1.70 lbs

REPLACEMENT JACK HANDLE

Complete stand for BE-120 A-frame jack comes with pin.



Part#	XA-003-999
Fits	BE-020, BE-050, BE-120, FJ-020, FJ-530

2" MOUNTING PIPE



Part#	64.002.000
Fits	ST-2104, ST2154
Weight	0.55 lbs

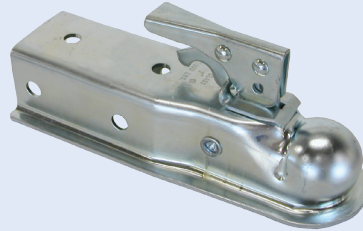
3" MOUNTING PIPE



Part#	64.003.000
Fits	LT-5103, LT-5153
Weight	1.40 lbs

**2" COUPLER, ZINC FINISH**

Part#	64.500.004
Capacity	3,500 lbs
Channel	2"
Coupler	2"
Finish	Zinc
Weight	4.40 lbs

3" COUPLER, ZINC FINISH

Part#	64.500.006
Capacity	3,500 lbs
Channel	2"
Coupler	3"
Finish	Zinc
Weight	4.30 lbs

2" A-FRAME COUPLER

Part#	64.500.100
Capacity	5,000 lbs
Type	A-Frame
Coupler	2"
Finish	Primed
Weight	8.05 lbs

2 5/16" A-FRAME COUPLER

Part#	64.500.101
Capacity	10,000 lbs
Type	A-Frame
Coupler	2 5/16"
Finish	Zinc Plated
Weight	8.70 lbs

BALL COUPLERS

Part#	Description
64.500.350	2" Ball, 1" Thread, 5,000 lbs
64.500.301	2 5/16" Ball, 1" Thread, 5,000 lbs
64.500.302	2 5/16" Ball, 1 1/4" Thread, 7,500 lbs

MOUNTS

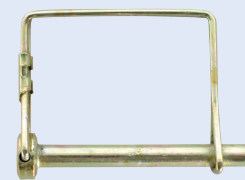
Part#	Description
64.500.320	Mount, Class 4, 2" Drop, 1" Hole
64.500.321	Mount, Class 4, 2" Drop, 1" Hole

24" ZINC SAFETY CHAIN

Part#	64.325.024
Description	G43 safety chain with open hook
Size	5/16"
Length	24 Inches
Weight	1.80 lbs

HITCH PINS

Part#	Description
720HP	Bent Pin, 1/2" x 3"
722HP	Bent Pin, 5/8" x 3"

LOCK PIN

Part#	Description
904PA	Lock Pin, Square 5/16"

BE 